

Driving on the roads requires care and courtesy whether you are driving a car or a bicycle. As road users, bicyclists must be predictable and obey all traffic laws by riding in a responsible manner.

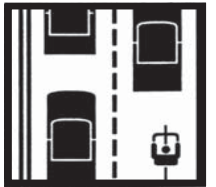
Want respect on the road? Respect the rules!

These laws are there for your safety. Happy biking!



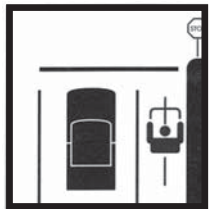
Wear a Helmet Correctly

Helmets are required by law for anyone under 16 but everyone should wear a helmet to prevent head injury. Your helmet should be level and snug.



Ride with Traffic

Always ride on the right side. Do not pass motorists on the right. If you approach an intersection with a right turn lane and intend to continue straight, ride with through traffic.



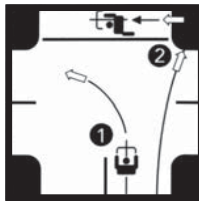
Obey All Signs and Traffic Lights

Bicycles must be driven like other vehicles if they are to be taken seriously by motorists. Never ride against traffic.



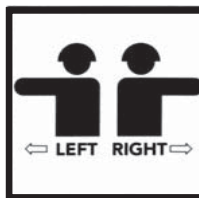
Ride to the Right (but not in the gutter)

Don't hug the curb—this makes you less visible to motorists. Riding predictably, in a straight line, is safest—don't swerve in and out of traffic to avoid potholes, broken glass, parked cars, etc. Ride about 3 feet away from parked cars to prevent getting 'doored.' If the lane is too narrow to share with a car, take the lane by riding in the center.



Choose the Best Way to Turn Left

There are two ways to make a left turn: 1) Like an auto: look back, signal, move into the left lane, and turn left. 2) Like a pedestrian: ride straight to the far-side crosswalk, then walk your bike across, or queue up in the traffic lane.



Signal All Turns

Look back before you make a lane change or turn. Signal safely in advance using one of these signals.



Go Slow on Sidewalks

Pedestrians have the right of way on walkways. You must give an audible warning when you pass. Be courteous by warning others with a ring of your bell or a friendly greeting. Go slowly at driveways and intersections and look carefully for traffic.



Always Ride with Lights at Night

Bicycle reflectors are not sufficient for safety. Tennessee State Law requires a headlight visible from at least 500 feet when riding at night. Flashing red tail lights and reflective clothing are recommended as well.

**Bicyclists
have the same
rights and
responsibilities
as motorists.**

**If you would like more information,
check out the Knoxville Regional
Transportation Planning Organization's
BICYCLE COMMUTE GUIDE
online at
www.knoxtrans.org/plans/bikeprog**



Suite 403 City County Building
400 Main Street
Knoxville, Tennessee 37902
865 215-2500
www.knoxtrans.org/plans/bikeprog

Funding provided by:
US Department of Transportation
Federal Highway Administration
Tennessee Department of Transportation

February 2006

Share the Road



Rules for Bicyclists

**“The Knoxville Regional Bicycle Program
envisions a convenient, efficient
transportation system where people can
bike safely to all destinations.”**